

ADAPTED SOLUTIONS

Calibrate & Certify
Measurement instruments

Maintain a high level of
technical excellence

Calibrating your logging tools
is now possible!



BRING IT



CALIBRATE IT



CERTIFY IT

The Center is the first link
in the probes calibration chain
for the borehole logging industry

total.com



Total is a major energy player, which produces and markets fuels, natural gas and low-carbon electricity. Our 100,000 employees are committed to better energy that is safer, more affordable, cleaner and accessible to as many people as possible. Active in more than 130 countries, our ambition is to become the responsible energy major.pany



TEP ASD
TOTAL E&P Alternative Subsurface Data
1, Chemin de Lapeyrade
64420 Artigueloutan - France
tep.asd@total.com
www.tep-asd.total.com

TOTAL S.A
Share capital : 6 667 476 275,00 euros
542 051 180 RCS Nanterre

Exploration-Production – Paris
Phone: +33 (0)1 47 44 45 46
2, place Jean Millier – La Défense 6
92078 Paris La Défense Cedex – France

Exploration-Production – Pau
Phone: +33 (0)5 59 83 40 00
Avenue Larribau – 64018 Pau Cedex – France



OPEN
INNOVATION
WELL
LOGGING

SUBSURFACE DATA
OPEN HOLE
CASED HOLE
GEOTHERMY
MINING
UNDERGROUND STORAGE

PHYSICAL MEASUREMENTS CENTER



TOTAL E&P ASD
Alternative Subsurface Data

EXPLORATION & PRODUCTION



A NEW
CALIBRATION
FACILITY
AVAILABLE
FOR YOU !

OPEN
TO ALL PLAYER

BRING & QUALIFY
YOUR R&D PROTOTYPE

→ Calibrate tools & methods with 'masters' standards

→ Develop new quantitative measurements

→ Improve the quality of existing probes

Stimulate innovative
and «fit for purpose»
services

WELL LOGGING CALIBRATION CENTER

Now you can

- Characterize new logging probe prototypes
- Calibrate "Master" logging probes
- Evaluate probe environmental corrections
- Calibrate probes that have undergone significant hardware modifications
- Calibrate & characterize your "secondary" standards by comparing with "Master" standards
- Quantify uncertainties measurements of logging probes
- Match your numerical logging tool models to analogical "standard" data



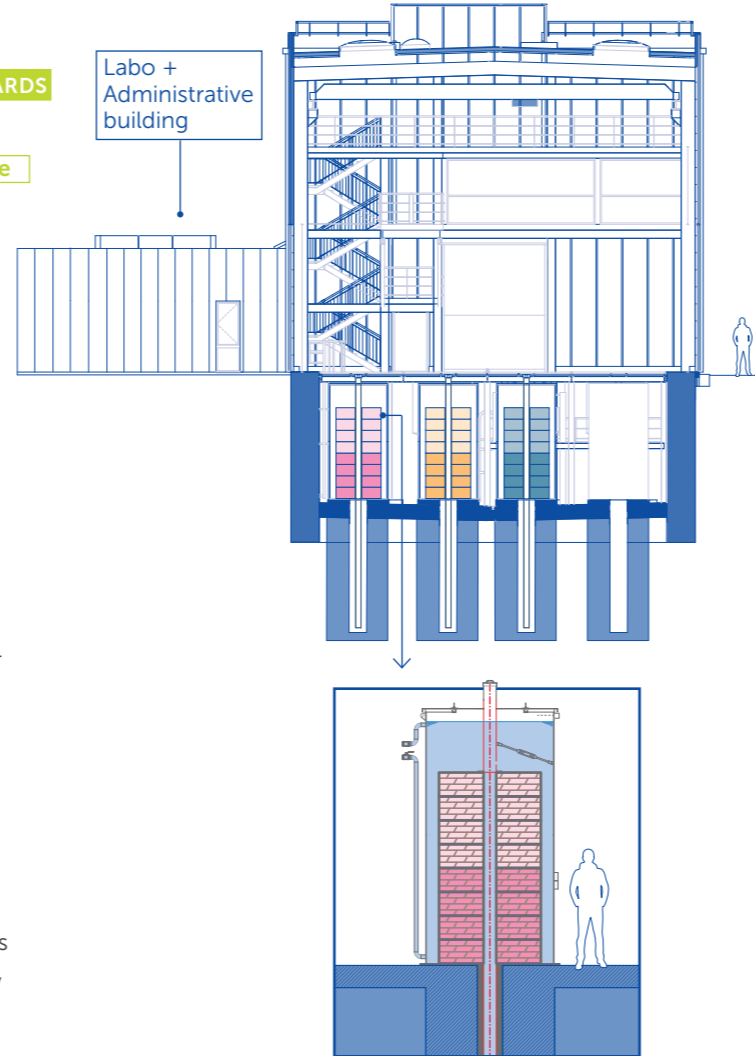
Base TACT : <https://tep-asd.com/>

STANDARDS

In International System Unit



- Labo + Administrative building
- ALUMINUM & COMPOSITE STANDARDS**
 - AS7G03 aluminum alloy
 - Polyurethane aluminum composite
 - Characterization of environmental corrections related to:
 - Drilling diameter
 - Drilling fluid density
 - Mud cakes nature thickness
 - SAND PACK STANDARDS**
 - Quartzitic sands
 - Dolomitic sands
 - High porosity values
 - Borehole fluid characteristics independent of the pore fresh water
 - 2,4 mm thick glass epoxy liner
 - FLUID STANDARDS**
 - Freshwater & Brines
 - Storage and fluid transfer activities to the sand packs & metal standards
 - 4 fluids to calibrate density porosity & sigma probes



ROCK STANDARDS

Rocks were chosen based on 3 criterias

- Geological
- Petrophysical
- Geochemical

18 'Masters' Standards:

- Made of 4 octagonal rock slabs
- Stored in cylindrical steel tanks
- Saturated with water or brines

3 Lithologies:

- Limestone
- Sandstone
- Dolomite

4 Porosity ranges 0 to 32%

CASING AND TUBING STANDARDS

Oil industry Steel casing

- 13 Casing and tubing removable sleeves
- Outside diameter = 9⁵/₈ to 2³/₈
- Linear weight = 32.3 to 4.6 lb/ft
- 2 closed ended tubings to allows tubing fluide changes
- Perforated and unperforated

TECHNICAL PLATFORM

- 7 Core cable winch
- Control room
- Private room for clients
- Dedicated radio protective equipment
- Bridge dech crane and handling equipment
- Radioactive source storage

REMOVABLE CASINGS AND COMPLETIONS

- Test your own completion in master standards!
- Removable casings, tubings available on site.



TOTAL E&P
ALTERNATIVE SUBSURFACE DATA
1, Chemin Lapeyrade
64420 Artigueloutan FRANCE

Visit us

www.tep-asd.total.com

QUALITY

TEP ASD's quality policy for logging tool calibration services in agreement with ISO 17025 requirements.

The accreditation ISO 17025 is related to the density and porosity measurements on rock samples.

OPERATION

Full & private access (daily rate)
Technical assistance included
Dedicated operator team

SAFETY

All operations will respect contract confidentiality clauses